



# PORT OF CALAIS

## A MULTIMODAL OFFER

SEA • ROAD • RAIL

*Flexibility & speed at your service*



## A reliable mass transport offer

The new terminal at the port of Calais offers customers an infrastructure that meets the highest international standards. The port can accommodate the largest jumbo ferries and guarantees optimised flow management in complete safety.

### + A new port

- 65 hectares of new land space alongside the quay, giving a total of 130 hectares
- 3 new berths for jumbo ferries, giving 8 in total
- Control zone with optimised flows.

These new infrastructure items guarantee maximum logistics performance and offer flexibility.

“ The short route between Calais and Dover remains the fastest and most relevant at the best price. ”



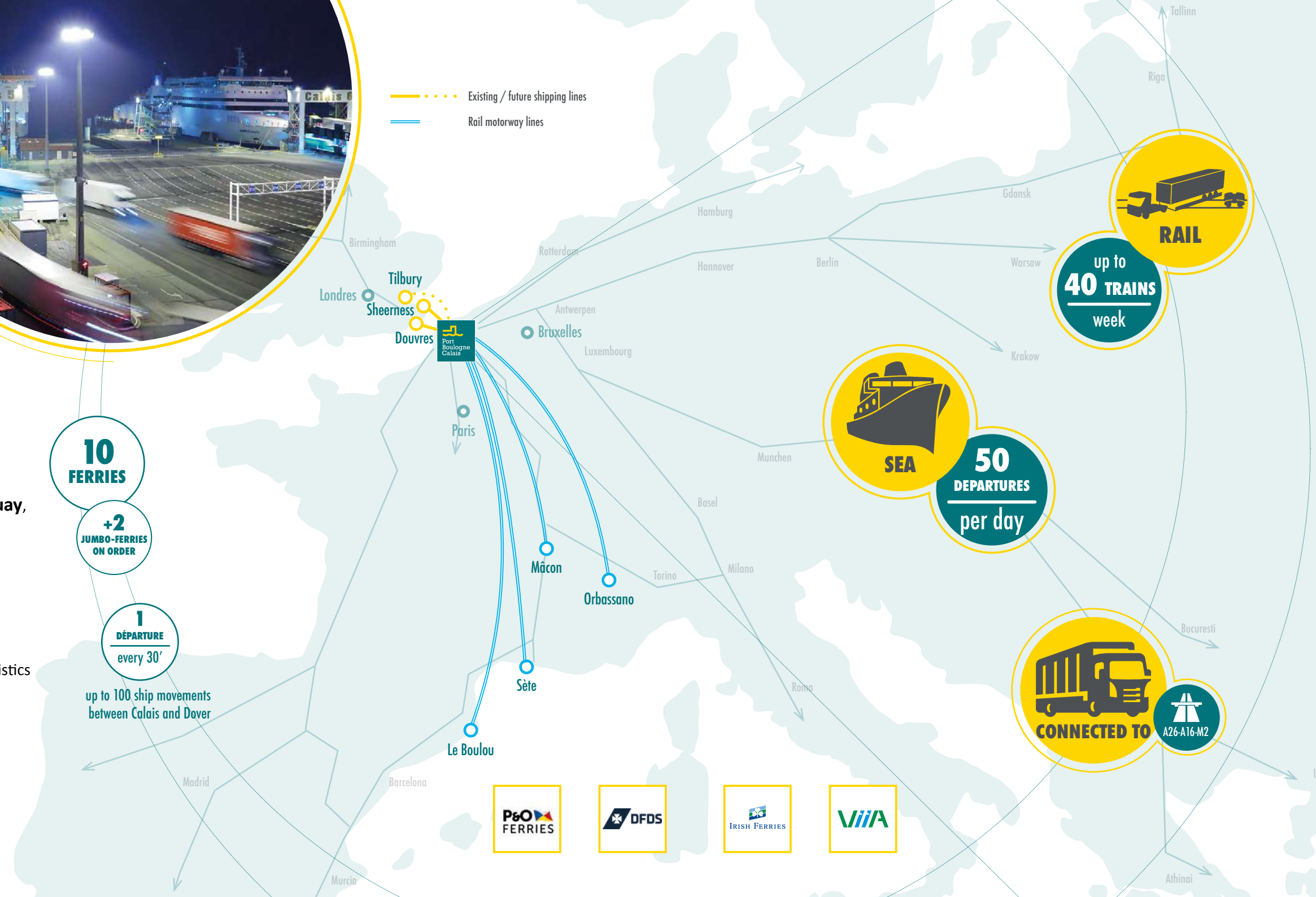
10  
FERRIES

+2  
JUMBO-FERRIES  
ON ORDER

1  
DÉPARTURE  
every 30'

up to 100 ship movements  
between Calais and Dover

Existing / future shipping lines  
Rail motorway lines



up to  
40 TRAINS  
week



50  
DEPARTURES  
per day



A26-A16-M2

24/7

## A port offering border crossing services

The establishment of the border between the United Kingdom and the EU at the port of Calais requires control facilities (Customs, sanitary and phytosanitary) as well as professionals ensuring the reliability and fluidity of the border crossing of goods. **The best professionals on the market are present at the port of Calais to guarantee efficient border crossings.**



*E-BORDER CALAIS PORT: The port of Calais has provided its customers with a free digital tool, called e-Border Calais Port, to coordinate inspection agents to ensure a better quality of service.*

Customs officers, veterinarians, freight forwarders, clerks and handlers are at your service 24 hours a day to ensure reliability, speed and fluidity of access to the European Union.



# Intermodal solutions for all your logistics organisations

Accompanied or unaccompanied, road or rail, ferry or RoRo, the port of Calais is a relay point that brings agility to your logistics chain between southern Europe, the Mediterranean and the British Isles.

The intermodal terminal, in the heart of the port, with its 13 ha platform, offers storage capacity of 600 trailers. It's equipped with:

- A Roro-rail rail motorway terminal allowing the transshipment of crenable or non-crenable trailers
- A combined transport terminal (P400, containers, swap bodies, etc.)
- 2 RoRo berths in the immediate vicinity of the terminal



To its ferry offer, the port of Calais has added a complementary logistics service:

- **VIIA**, the rail motorway operator, offers around forty trains each week for your trailers, containers and swapbodies:
  - o Calais / Le Boulou (Spanish border)
  - o Calais / Orbassano (Turin – Italy)
  - o Calais / Mâcon
  - o Calais-Sète
- **DFDS** provides a daily RoRo service :
  - o Calais / Sheerness (London)

## In the immediate vicinity of the port:

Transmarck's logistics zone offers infrastructure and services adapted to your needs to facilitate transshipment to and from Great Britain.

- Storage
- Cross-docking
- Secure parking
- HGV service station (fuel, washing, etc.)
- Transit and freight forwarding
- Cargo Beamer rail motorway terminal providing the Calais-Perpignan and Calais-Domodossola (Italy) services

**Anthony Pétilion**

+33 (0)6 71 01 84 97

anthony.petillon@portboulognecalais.fr

Société d'Exploitation des Ports du Détroit

285 avenue du Mérite Maritime

62105 CALAIS Cedex

